

Definition - What does Control Panel mean?

The [Control Panel](#) in Windows is a collection of [applets](#), sort of like tiny programs, that can be used to configure various aspects of the [operating system](#). The control panel, in the context of Windows, is a software module used to perform administrative and management operating system tasks and/or provide access to specific software features.

The control panel is used to configure and manage almost all aspects of Windows, including keyboard and mouse functionality, users and passwords, power options, network settings, desktop background, display settings, sound settings, mouse settings, hardware and software options, installation and removal of programs, parental control, speech recognition, etc.

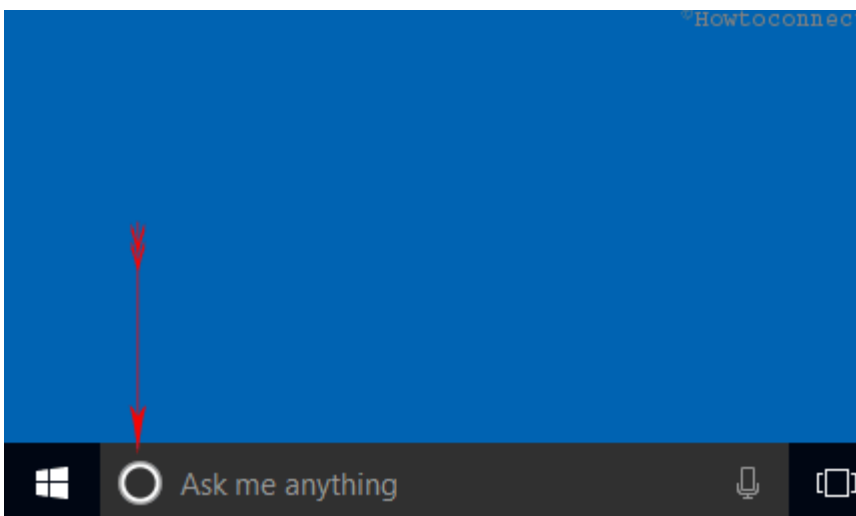
How to connect/and or open Control Panel

1. click the combination of Win and X keys you see a list of options

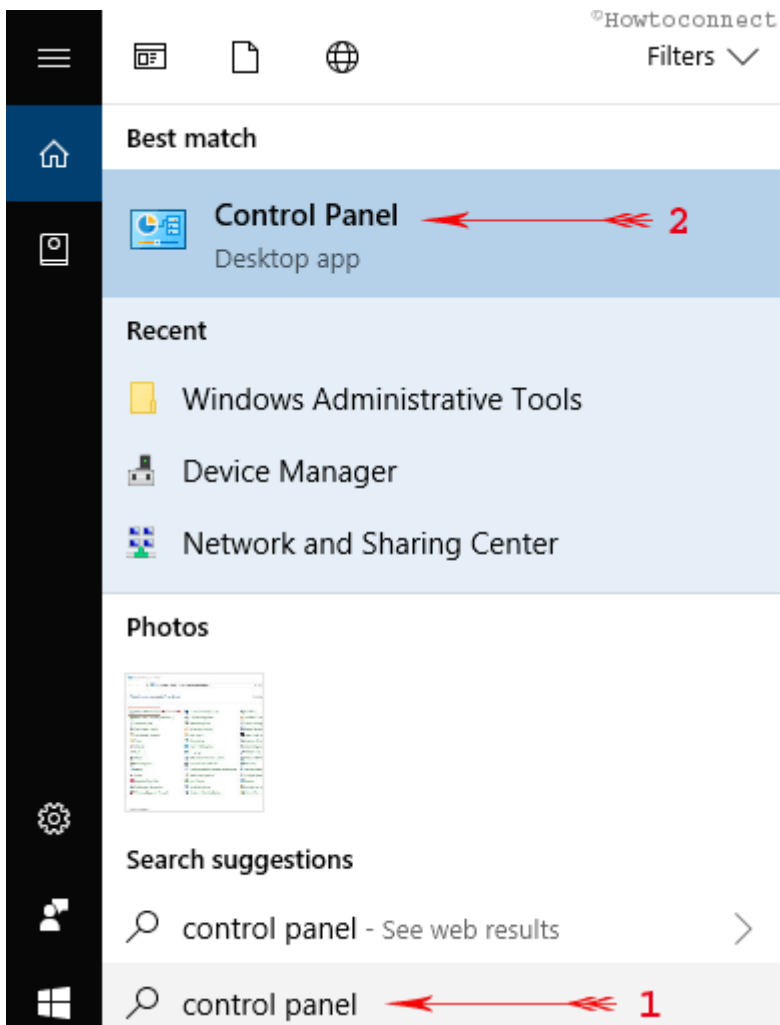
How to Open Control Panel on Windows 10

From Cortana Search

- Click on **Cortana Search** on Windows 10 [Taskbar](#).



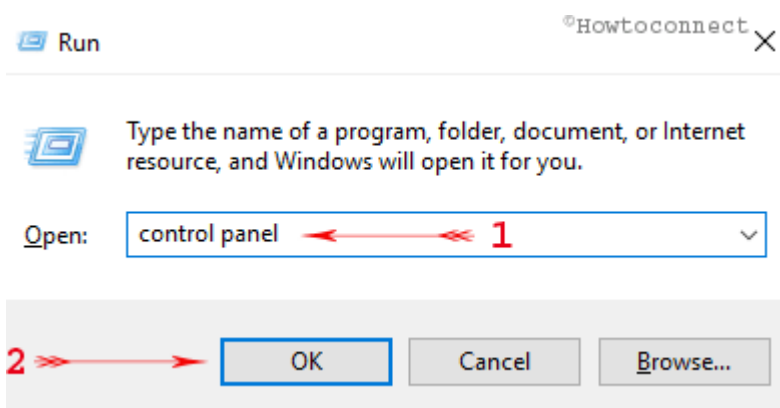
- Write **Control Panel** in the search box and click on the result at the top.



Open Control Panel from Run

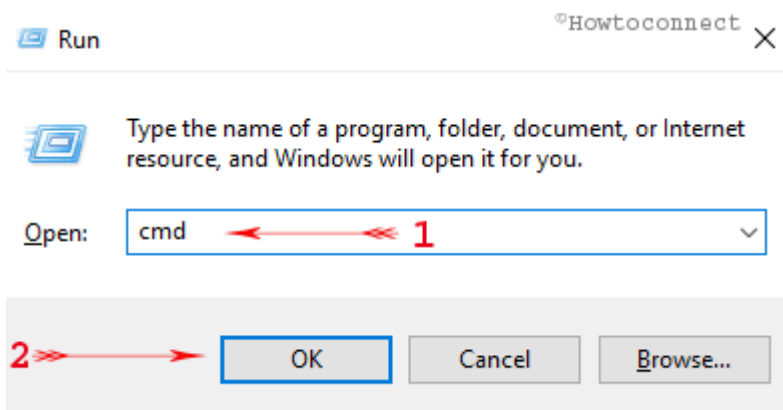
Windows 10 Control Panel Command line:

- Hit **Windows+R** at the same time.
- Write **control panel** in the box (You can also type only **control**).
- Press **OK**.



Open Control Panel on Windows 10 From Command prompt

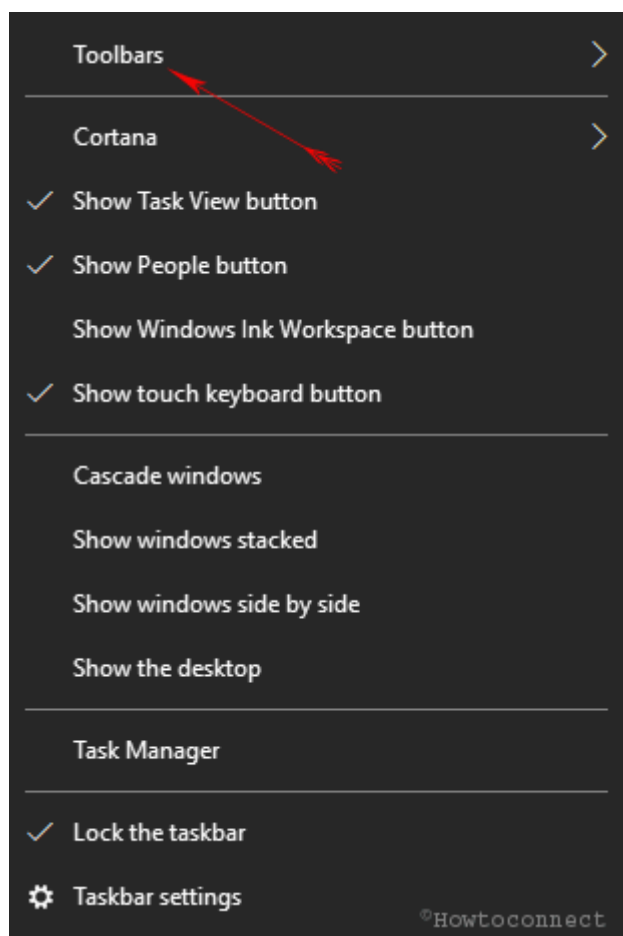
- Launch run box by hitting **Window+R** altogether.
- Type **cmd** in the run box.



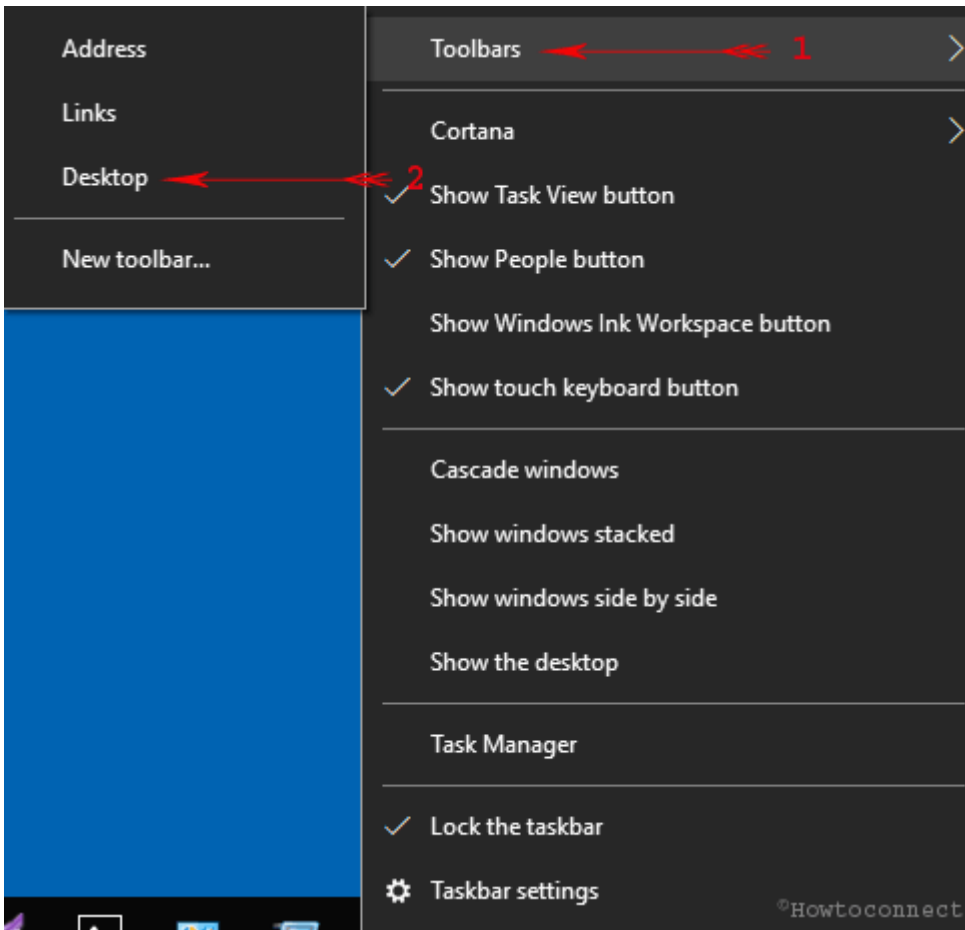
- Hit **Enter**.
- Copy the command from below and paste it in command prompt.
start control
- Hit **Enter**.

Via Desktop Toolbar to the Taskbar

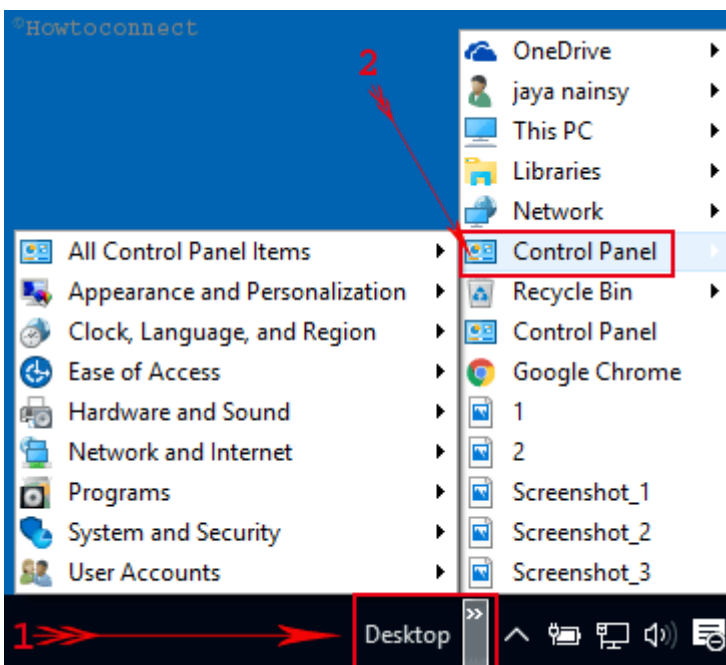
- Locate and perform a right-click on a vacant spot on the **Taskbar** and head to the top choice, **Toolbars** and put the cursor over it.



- Few additional options will appear, click on **Desktop**.



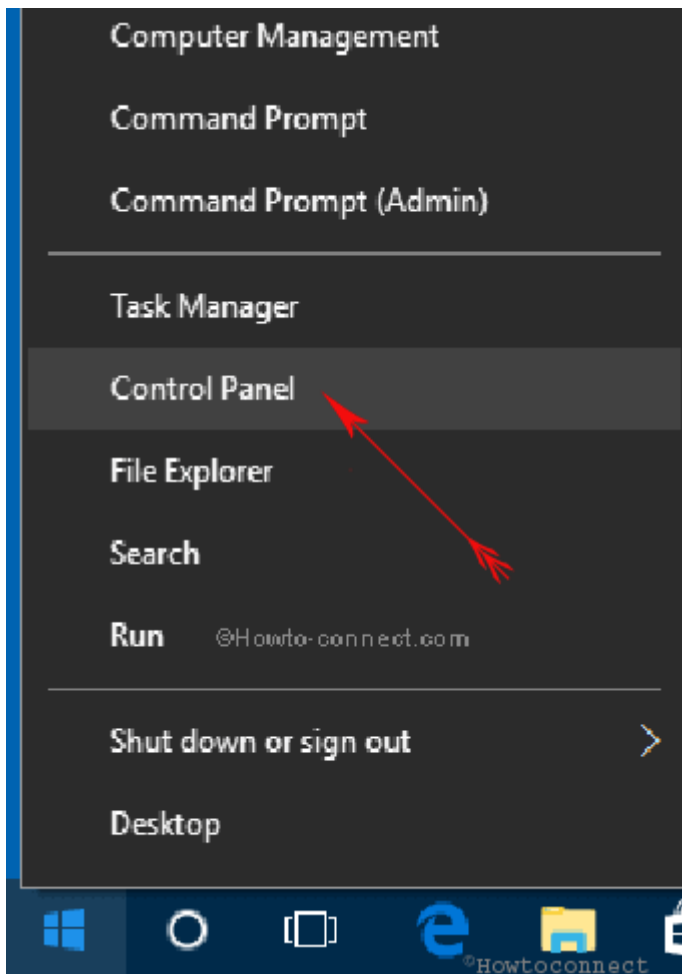
- Now, the **Desktop toolbar** will appear on the taskbar, click on its arrow. Then, click **Control Panel** and allow its shortcut items menu pop-up.



Through Power User Menu

At first, we want to clear that Power user menu is the menu that opens after right click on Start icon on the Windows 10 Taskbar. For the solution of how to Open Control Panel on Windows 10 – Instant Ways through power user menu:

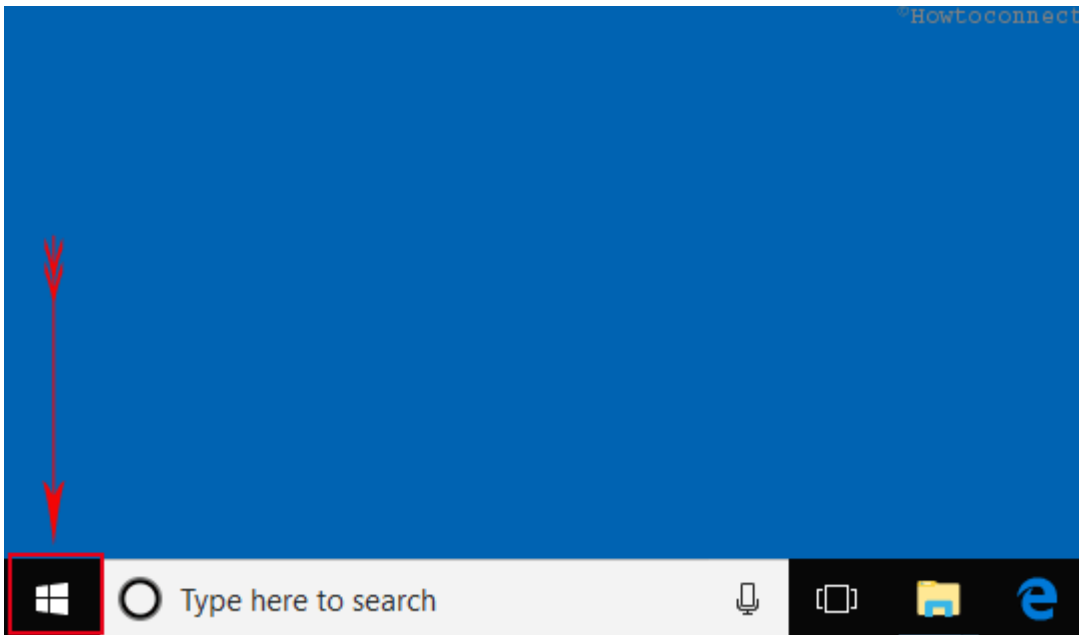
- Right-click on **Start** icon at the lowest left side on the desktop screen.
- Click on **Control Panel**.



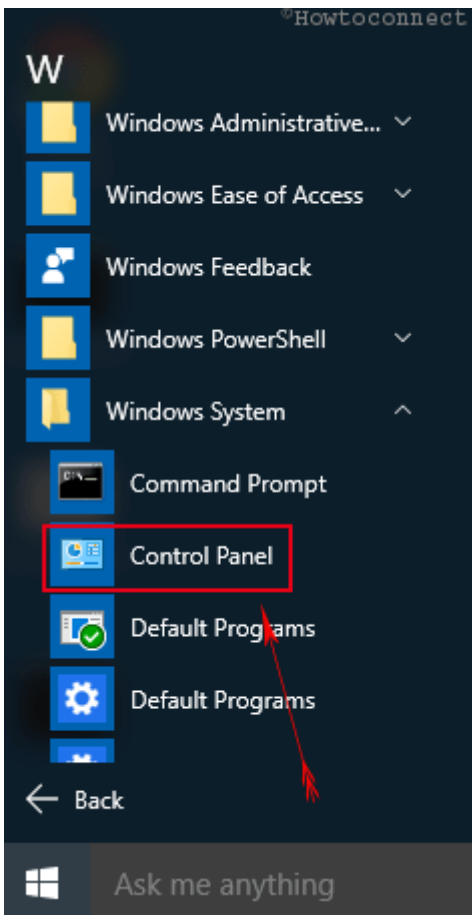
Update – The recent build has removed Control Panel from Power User Menu. However, a third-party tool is out there which can eventually show up Control Panel on the Power User Menu. If you wish to do so, the article – [Display Control Panel on Power User Menu Instead Settings Windows 10](#) will guide you for the same.

Manually Through Start Menu

- Unwind **Start Menu** by hitting on **Windows** icon the taskbar at the lowermost right corner of your screen.



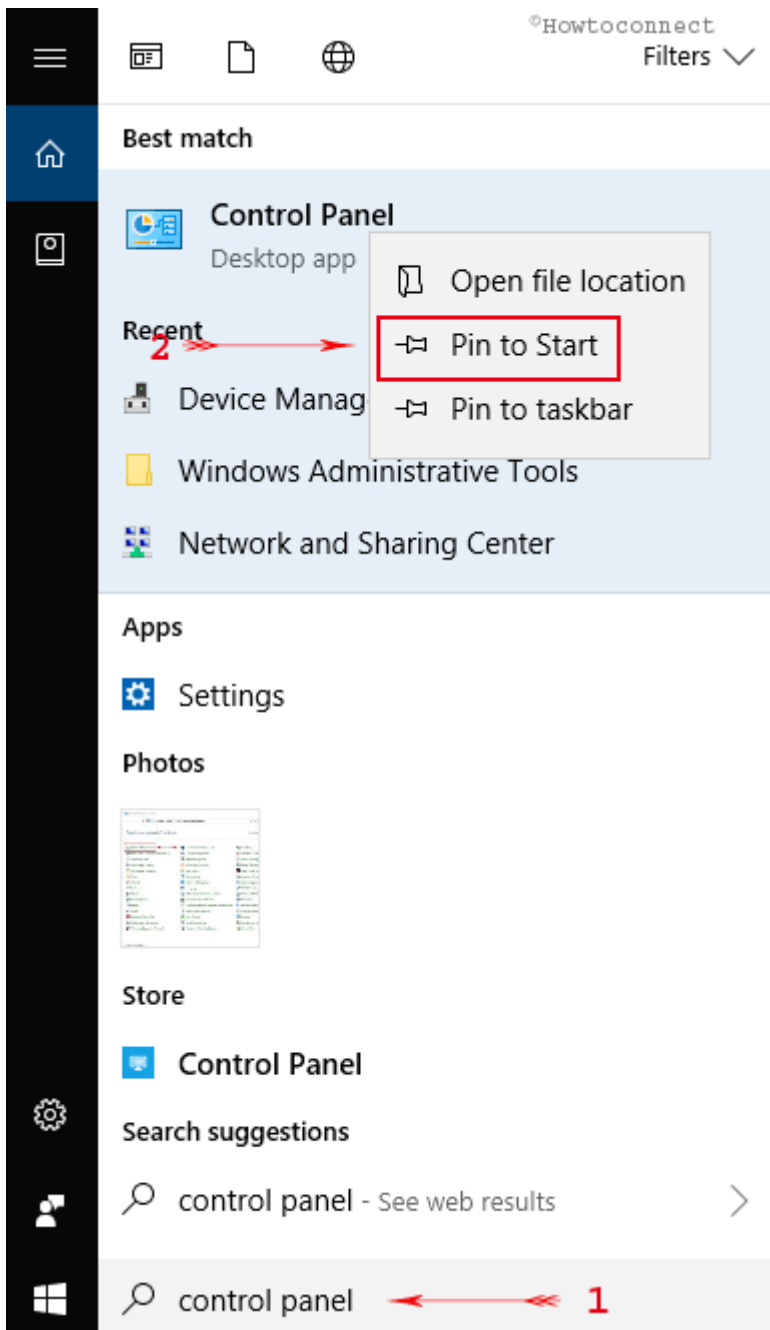
- Scroll down till **W** letter comes to view. Under **W** letter, press **Windows system**. On the second position from upward, you get **Control panel**.



- If you open Control panel repeatedly you view it on **Most used** segment whenever you launch the [start menu](#).

Pin Control Panel to Start

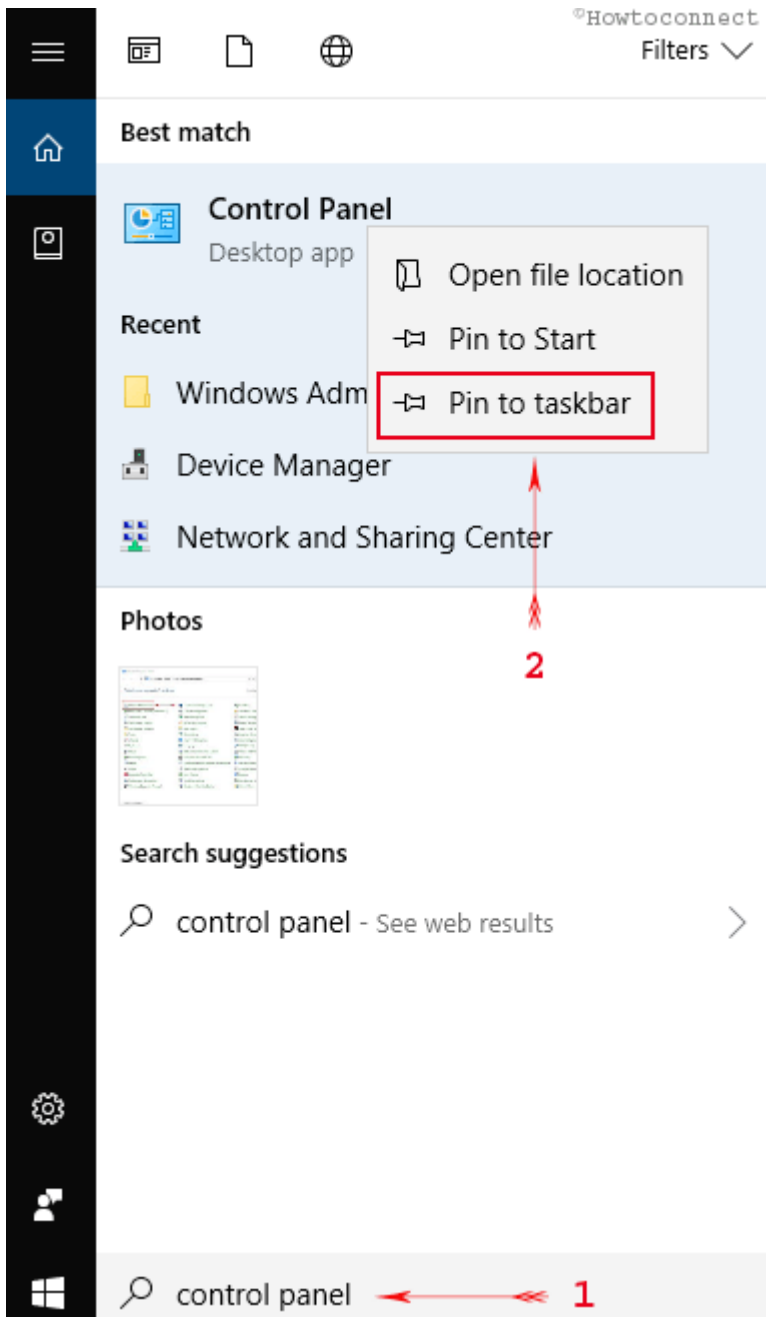
- Type **Control Panel** in the **Cortana** search field.
- From the arrived search result, right click and choose **Pin to Start** option.



Pin Control Panel to Taskbar

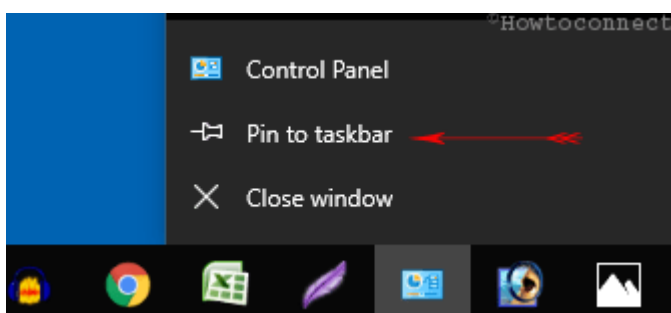
a)

- Alternatively, you can pin it to taskbar from **Cortana**. Type the phrase **Control Panel** on **Cortana**.
- You can see **Control Panel** (Desktop app) as an end result. Right-click on it and pick up **Pin to taskbar**.



b)

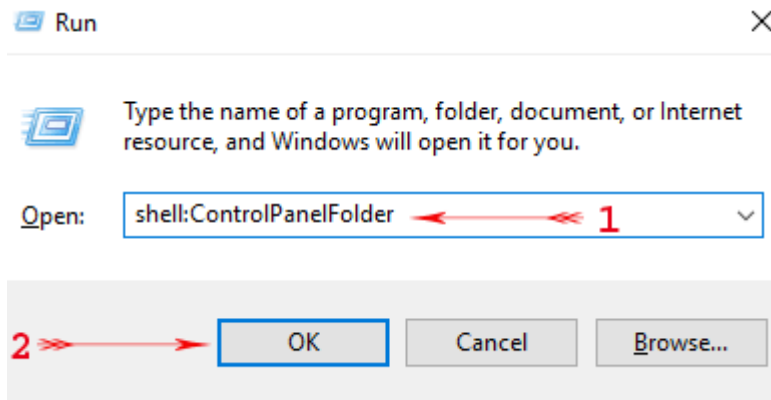
- Launch **Control Panel**.
- Right-click the icon on the taskbar of Windows 10.
- The jump list will be visible with various choices, click on the that reads as **Pin to taskbar**.



Through Shell Command

- Press **Win+R** Keys jointly.
- Copy the underneath particular Shell Command and paste in the space given after you open the run box.

shell:ControlPanelFolder

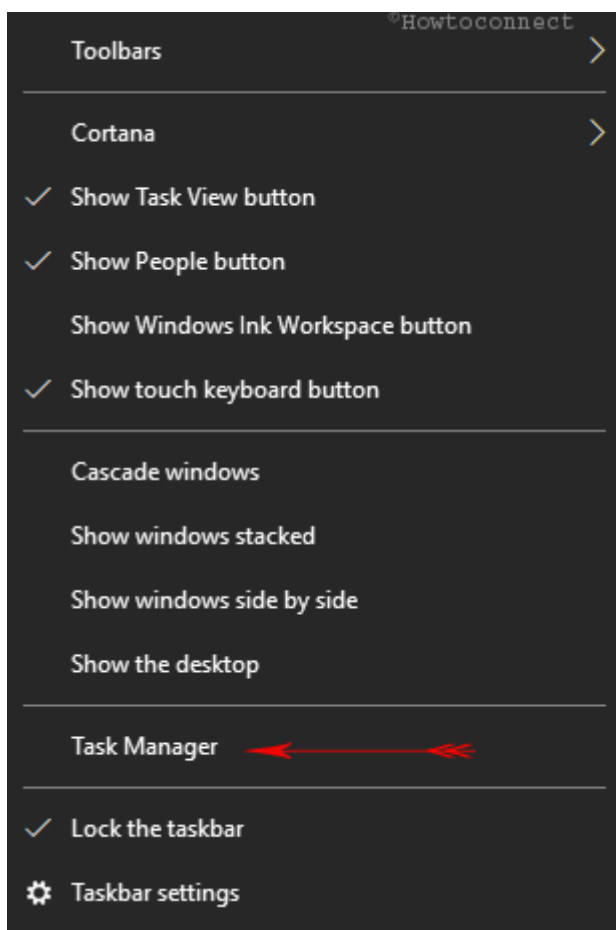


- Tap **Enter**.

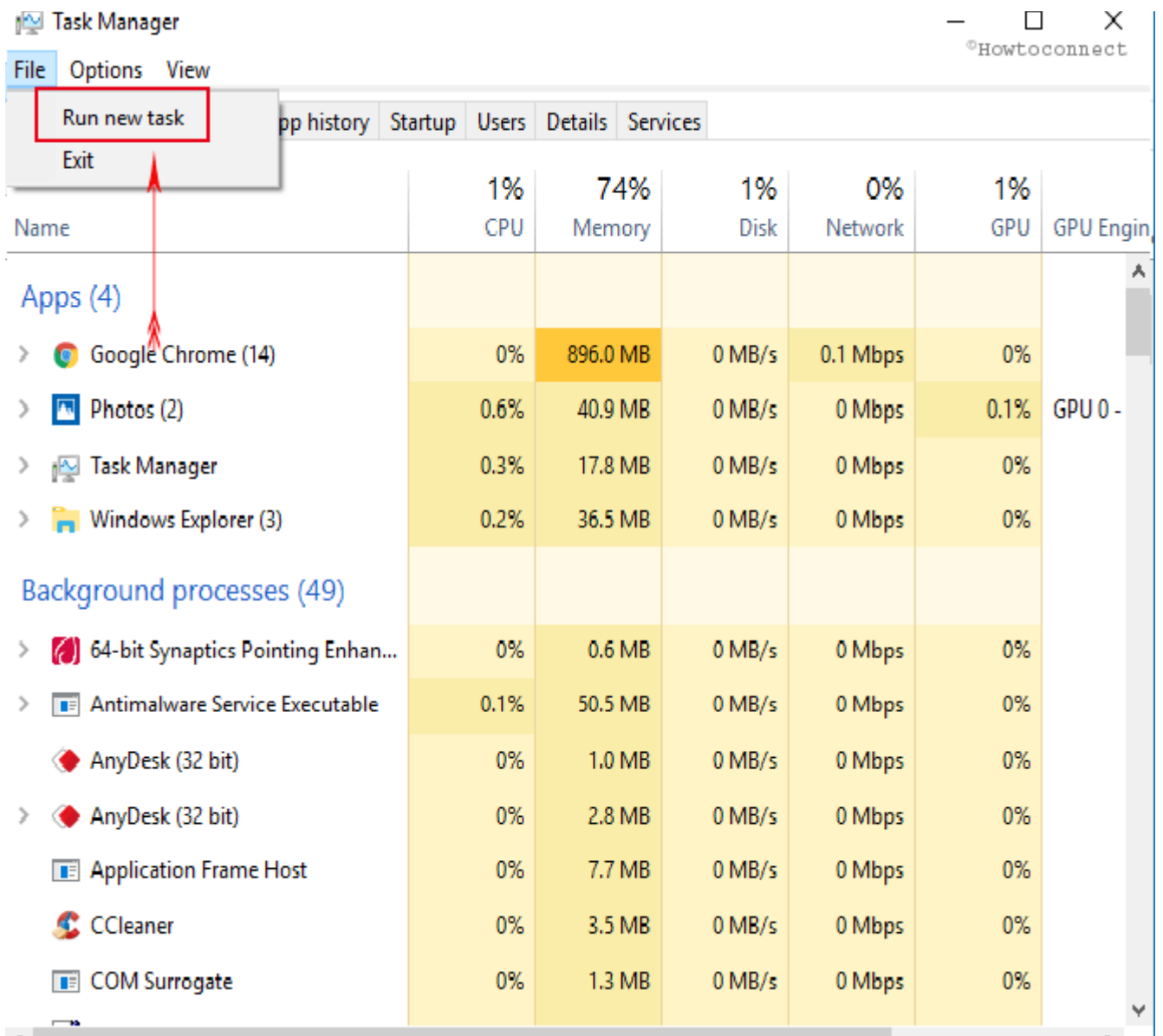
Through Task Manager

This is an absolutely lately discovered [possible](#) method. Emulate the underneath addressed steps to unwrap Control Panel via task manager in Windows 10.

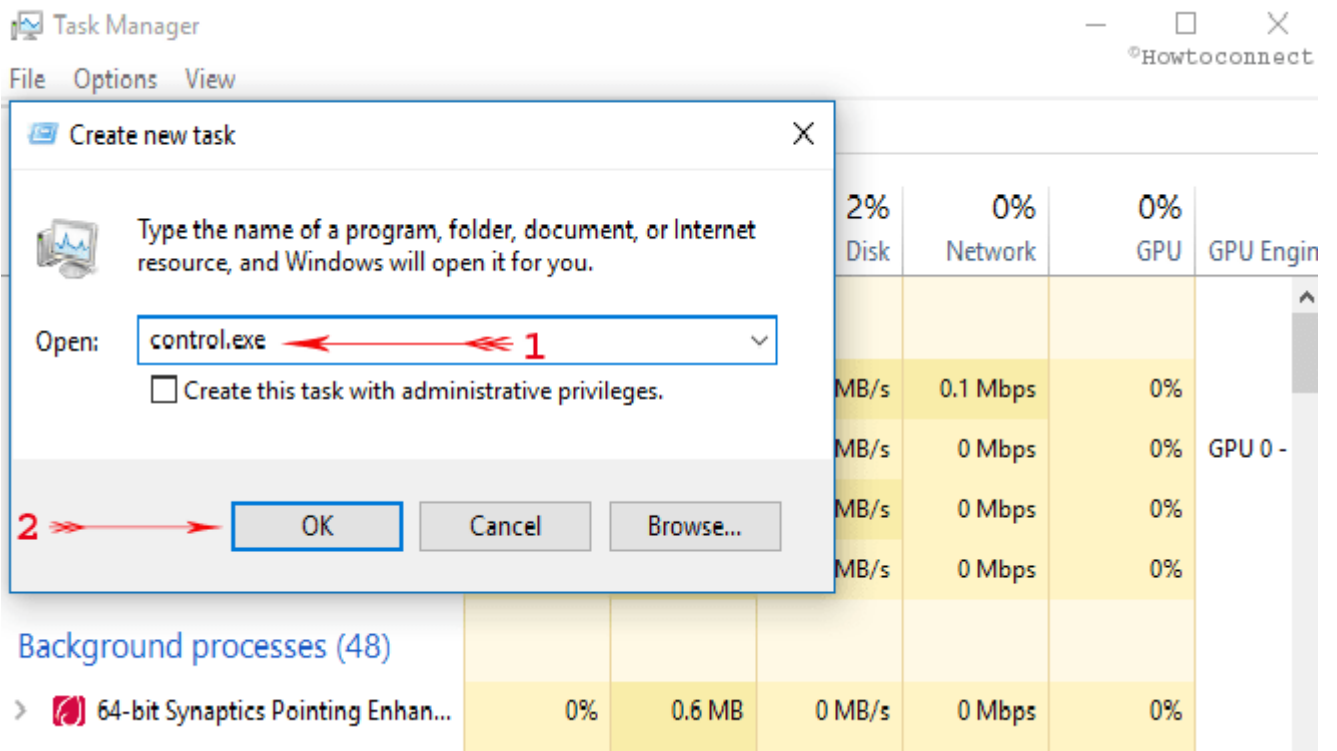
- Administer a right click where you witness an unfilled section on the taskbar and go along with **Task manager** choice which is at the 3rd position from the bottom.



- Next, on the menu bar, click **File** followed by a click on the first choice **Run new task**.



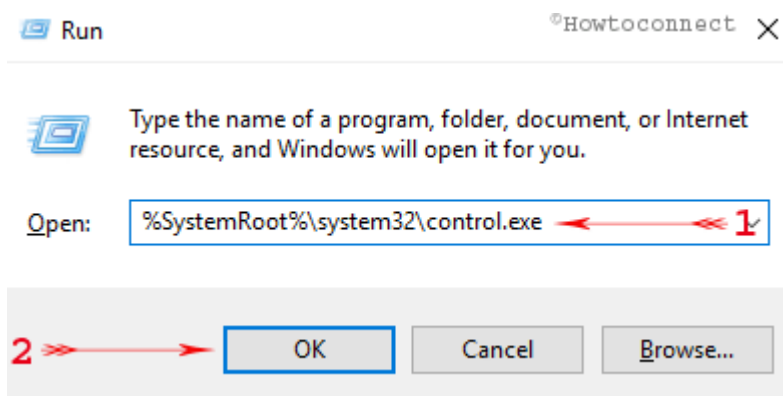
- In the new dialog box, write out **control.exe** and click **OK**.



Using Shortcut Path

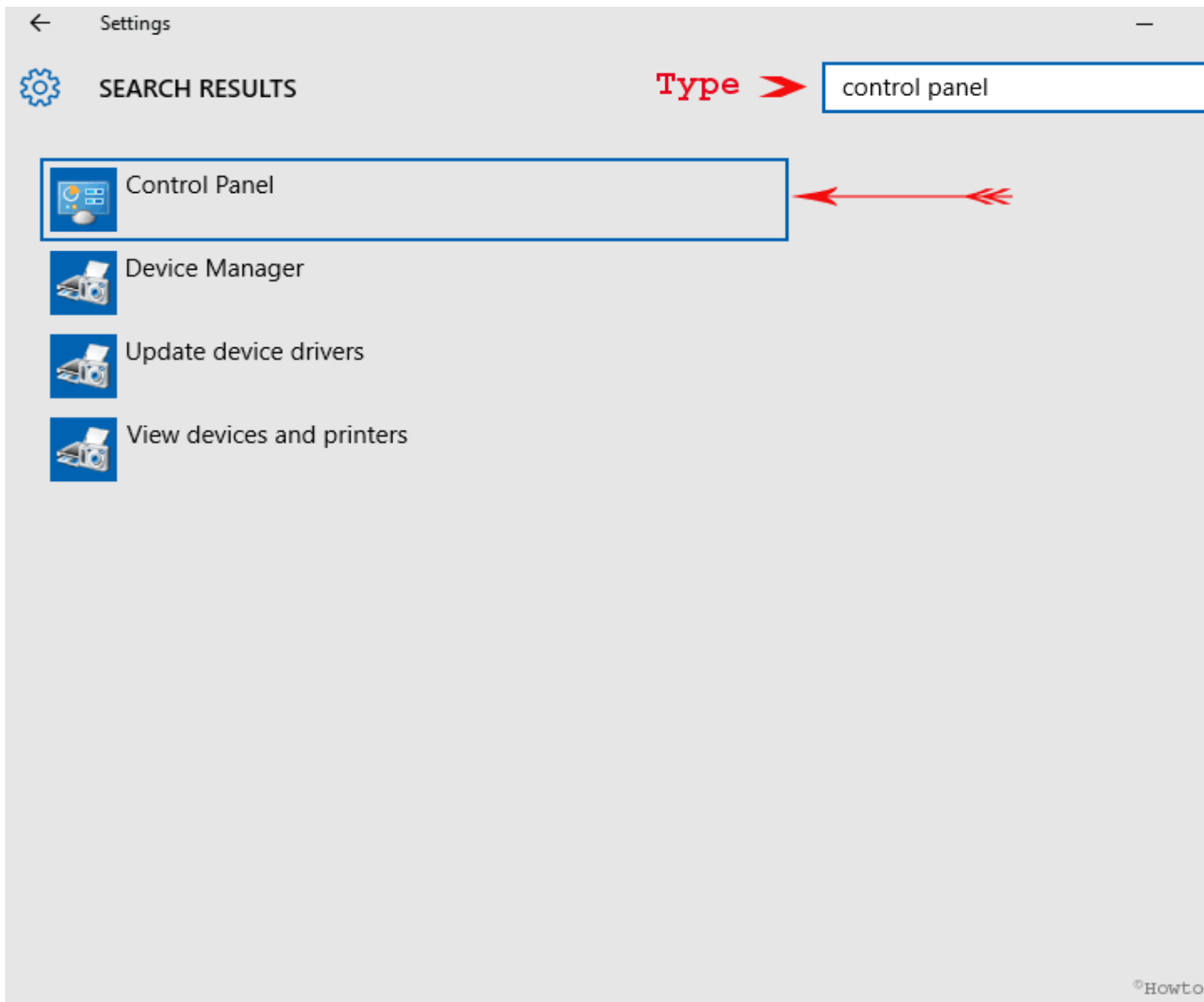
To access Control panel using default shortcut path by means of its execution in the run dialog box is a pretty straightforward job.

- Launch **Run** box via a strike on the combo of **Win** including **R**.
- Copy the below-written default shortcut path, paste here and press **Enter** –
`%SystemRoot%\system32\control.exe`



Open Control Panel on Windows 10 From Settings

Click Win+I and once the Settings app opens, type **Control panel**. Press Control Panel or its icon in the search result drop-down on Settings application.



Final Words

In this way, the control panel is accessible from pretty near everywhere on your Windows 10 PC.

But in this article, we have inscribed those ways

which are extra suitable and help you to open very easily and instant.